

FOR SEQUENCE

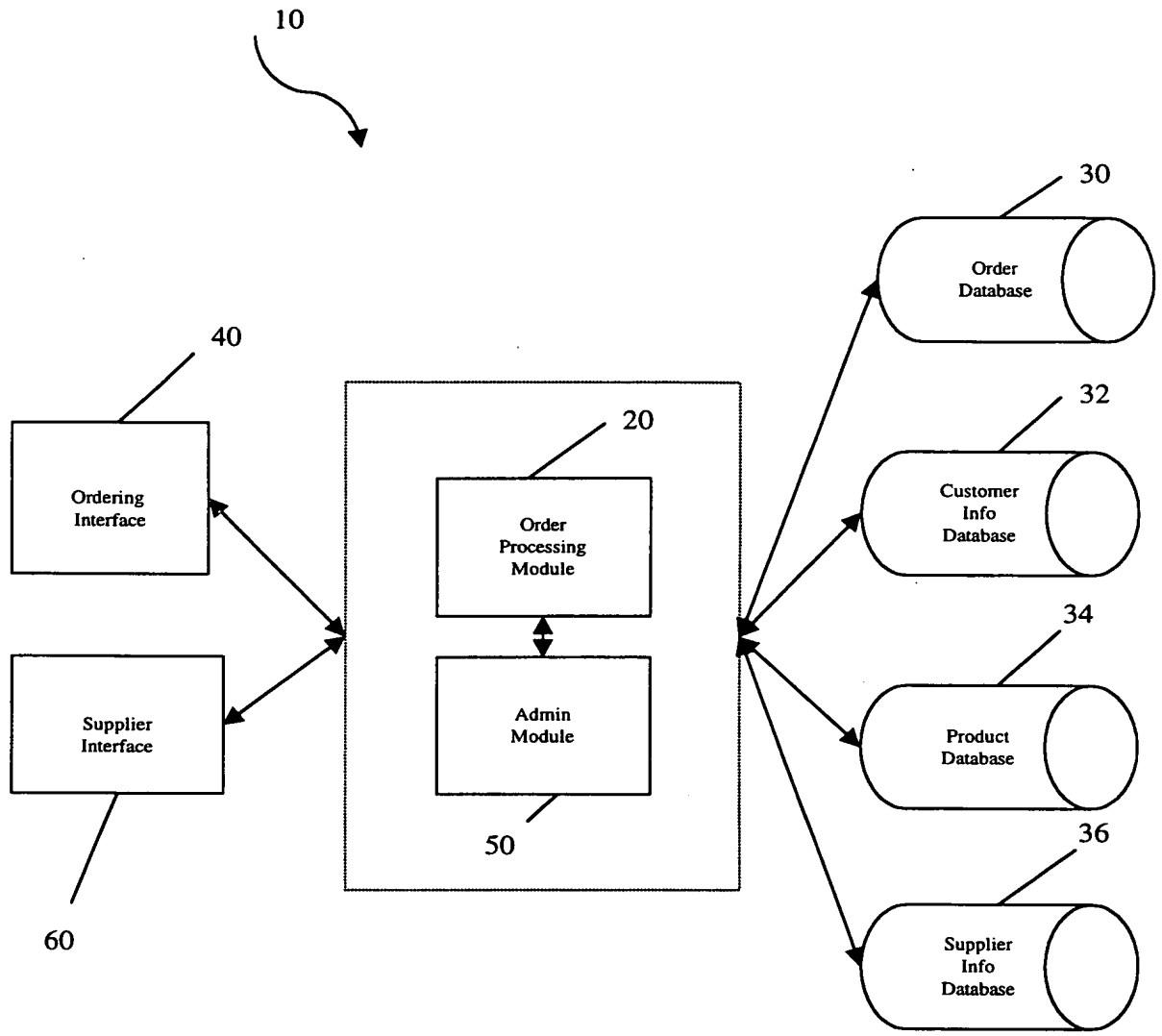


Figure 1

Patent 3,000,000

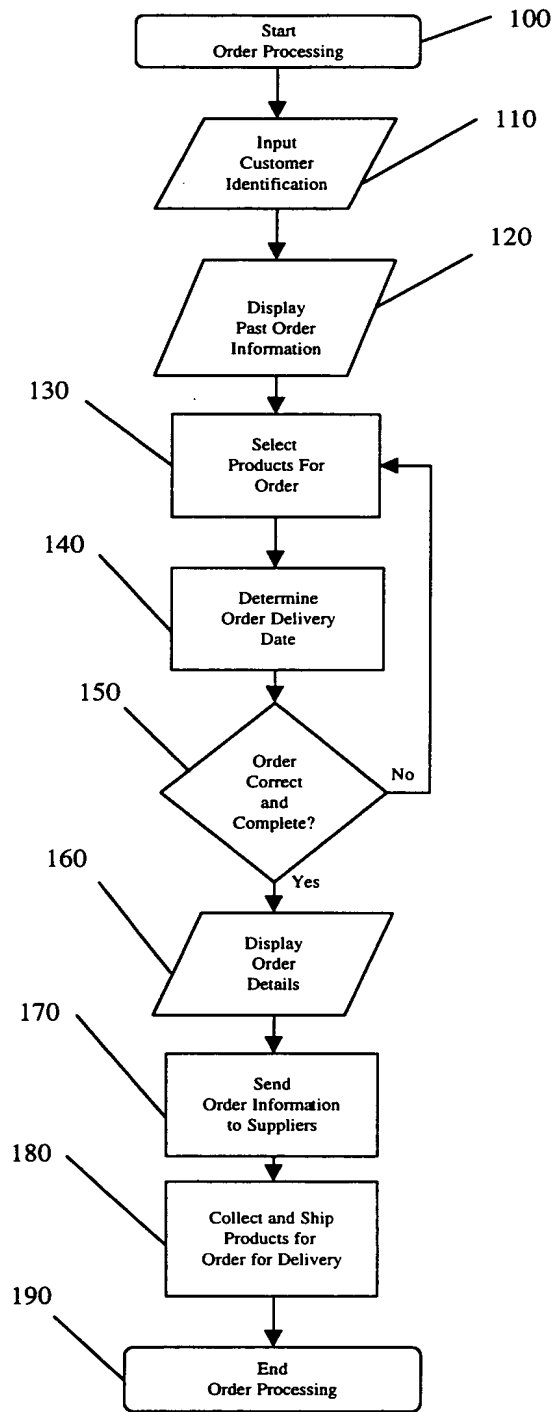


Figure 2

FOR SEBECO

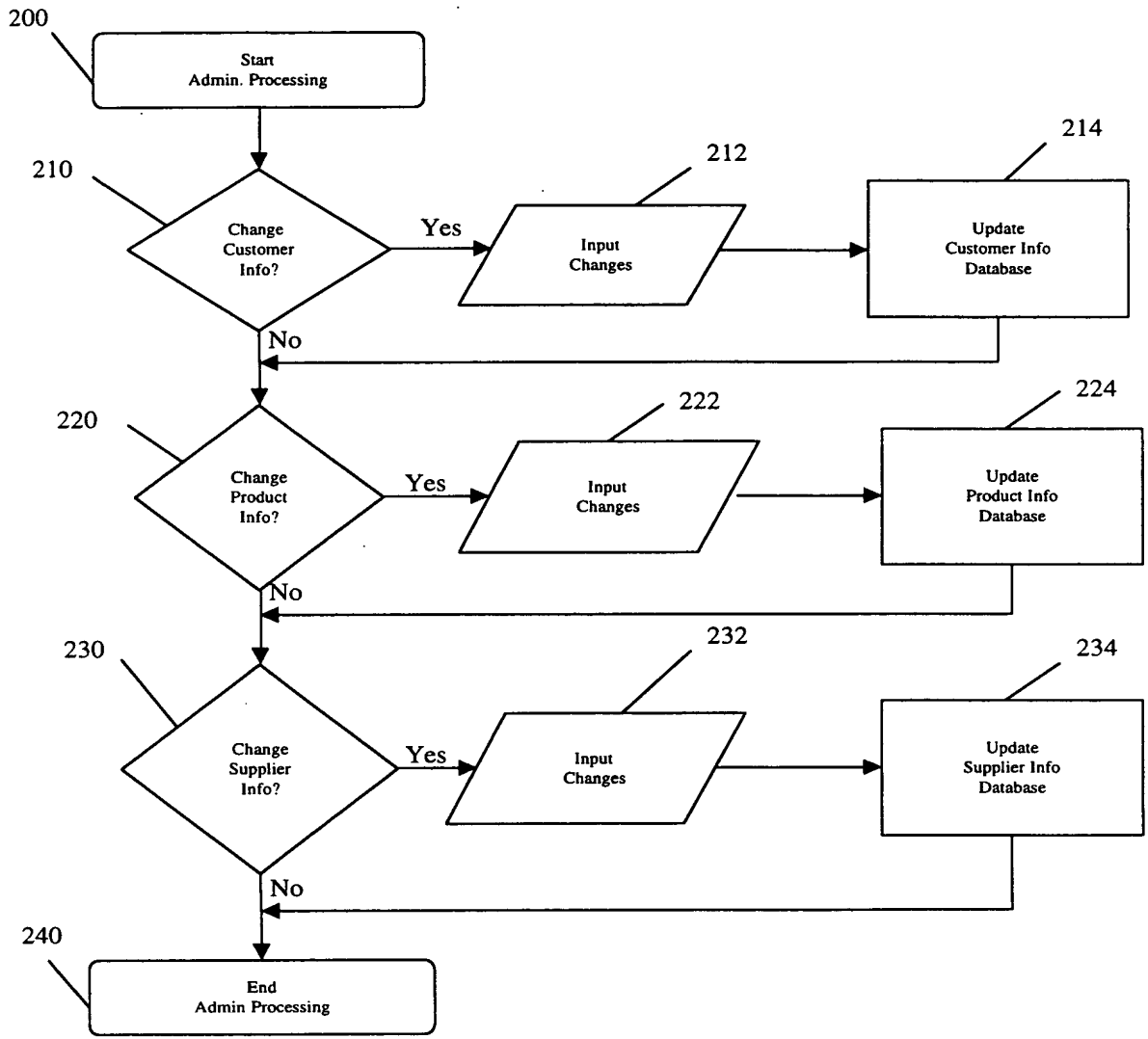


Figure 3

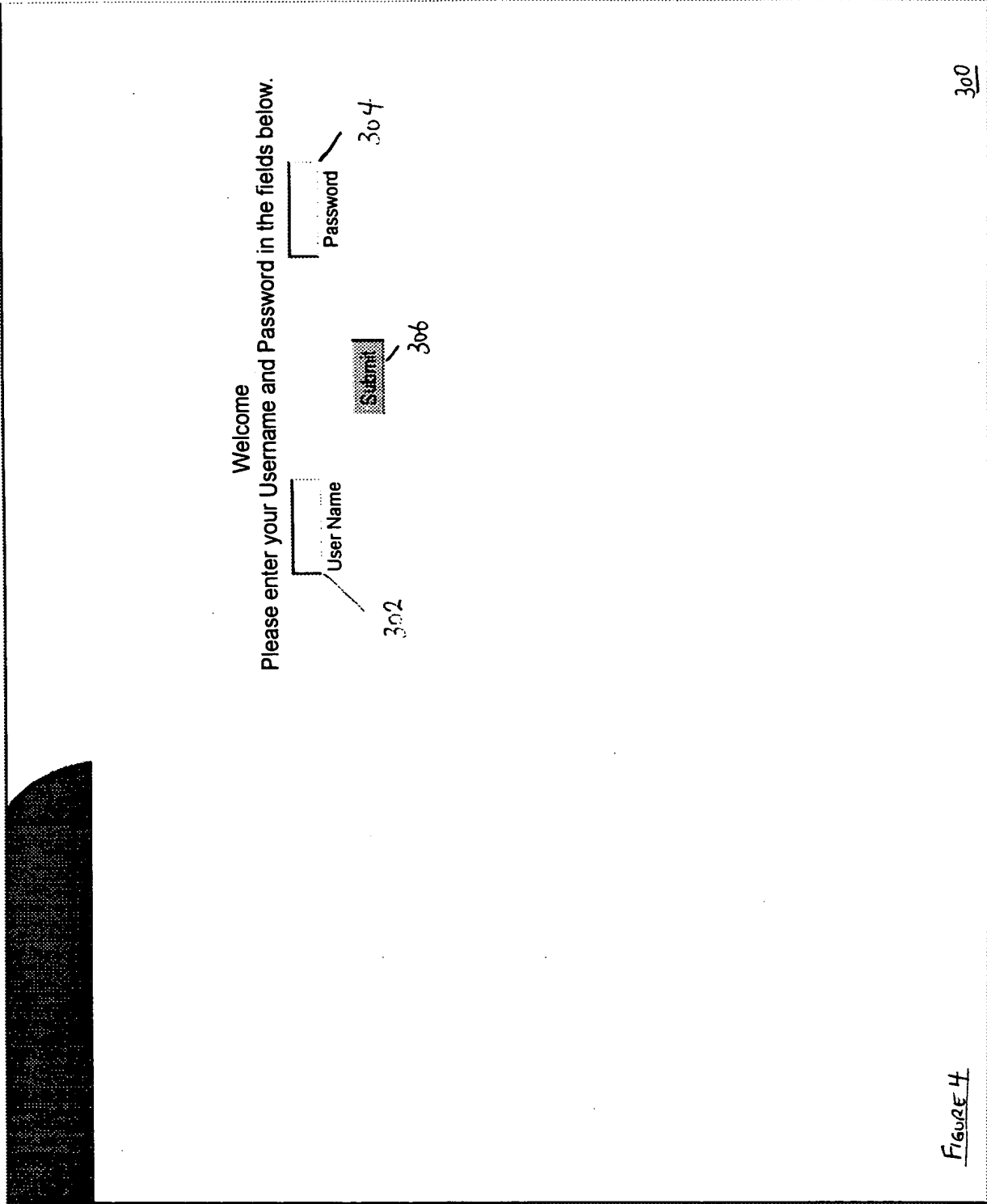
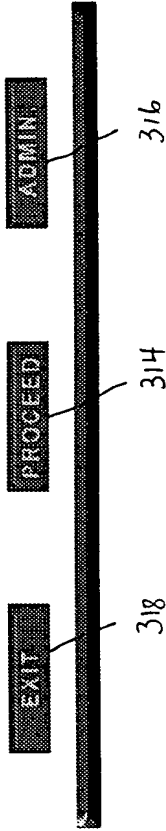


Figure 4

Welcome to the Express Ordering System, the only supermarket food processing order system available on-line. This note is available by Store ID ONLY!!

Please verify that the information listed below is accurate. We rely on the accuracy of this information to distribute perishable goods. If you are not the person identified, exit the site immediately and try to log on again. If you are the person identified, select "Correct" and proceed to the order processing area. If any of the information listed needs to be corrected, please contact the System Administrator by clicking on the "Administration" button below.

Jasmine Barrette } 312
Salad Station }
Retail Station }
Soup Station }
ABC Marche
123 Any Street
Toronto Ontario M1N 1N1
Phone 416- 222- 1234
Fax 416- 222-1235



Welcome Jasmine Barrette

[Order Desk](#) 330
[Information](#)
[Post Office](#) 332
[Review Orders](#)
[Help](#)
[Home Page](#)

[Outstanding Orders](#) 326
[Previous Orders](#) 328
[Saved Orders](#)

ALL OUTSTANDING Orders for ABC Marché

Today's Date: Tuesday May 23, 2000

Below is a list of all orders that are in the system but have NOT been shipped.

Order #	Supplier	Order Date	Delivery Date	Ordered By	Status
525	Supplier A	May 20, 2000	May 24, 2000	Jasmine	Received
526	Supplier B	May 23, 2000	May 27, 2000	Jasmine	Submitted
580	Supplier C	May 23, 2000	May 27, 2000	Louie	Submitted

324 }
 327 }
 328 }
 329 }
 320 }

Click on the "Order Number" to review an order.

Figure 6

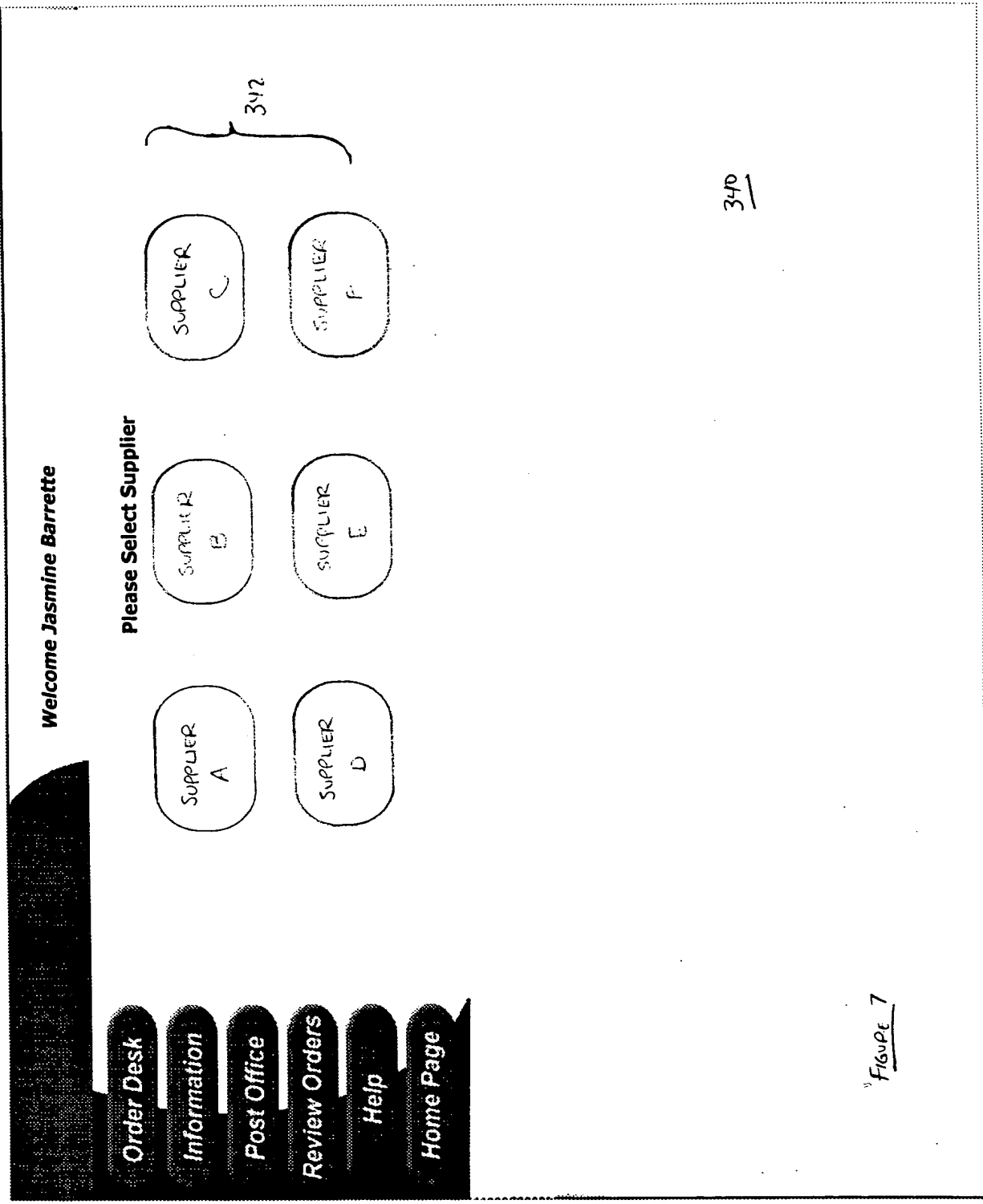


Figure 7

Welcome Jasmine Barrette

Order Desk

Information

Post Office

Review Orders

Help

Home Page

SUPPLIER
A

Specials

Item	Code	Packaging	Feature	Feature Price
352- Bruschetta Modena	MV-BR	4 KG.	Ththrough May 30, 2000	20% off
352- Chick Pea Salad	MV-CP	4 KG.	Ththrough May 30, 2000	20% off
352- Coleslaw	MV-COLE	3 KG.	Ththrough May 30, 2000	20% off
352- Orzo Salsa Salad	ORZ	4 KG.	Ththrough May 30, 2000	20% off
352- Waldorf Salad	W	4 KG.	Ththrough May 30, 2000	20% off
352- Caesar Dressing	MV-CD	4 KG.	Ththrough May 30, 2000	20% off

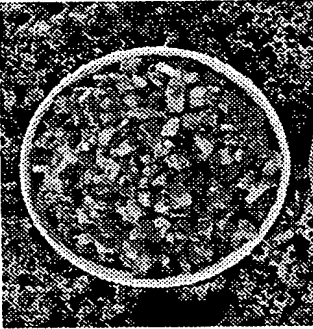
352

Proceed to Order Page 354

350

FIGURE 8

Bruschetta Modena



INGREDIENTS: TOMATO
KETCHUP (TOMATO PASTE,
SUGAR, WHITE VINEGAR, SALT,
ONION POWDER, SPICES),
BEEF, PICKLES, WATER,
TOMATOES, PEPPER, ONIONS,
OLIVES, VINEGAR, JALAPENO
PEPPERS, SALT, HERBS AND
SPICES

Package and Size

4 kg. easy carry pail.

Handling Information

Refrigerate at 4 - 6 degrees
centigrade. Open air chiller can
reduce shelf life. Standard
replenishment time 6 - 10 days.

Details

24 hour turn-around on orders
placed before 2 pm.

\$22.64 / 4kg. pail

Welcome *Jasmine Barrette*

You are authorized to purchase for the following stations;

- SALAD 362
- RETAIL 362
- SOUP 362

Please select one to continue.

Order Desk

Information

Post Office

Review Orders

Help

Home Page

FIGURE 10

Welcome Jasmine Barrette

Save Order | Repeat "Last Order" | Submit Order | Explain Options

372 372 372 P.O.# 376

First Possible Delivery Date: May 27 2000 375

SALAD - BULK

Description	Code	Packaging	QTY
Artichoke Touluse	ATS	4 KG.	3
Baby Vegetable	BV	4 KG.	0
Bruschetta Modena	MV-BR	4 KG.	0
Carrot & Raisin Salad	BR	4 KG.	0
Chick Pea Salad	MV-CP	4 KG.	6
Chinese Noodle Salad	MV-CN	3 KG.	0
Coleslaw	MV-COLE	3 KG.	0
Cousc. Bilk Bean & Corn	CBC	4 KG.	4
Creamy Coleslaw	CCOLE	5 KG.	0
Creamy Potato Salad	MV-CPS	4 KG.	0
Creole Rice & Bean	CRB	4 KG.	0
Curry Chicken Bombay	CBOM	4 KG.	0
Deluxe Bean	DB	4 KG.	0
Dill Matjes Salad	DMHS	4 KG.	9

373

Figure 11

Welcome Jasmine Barrette

Order Desk

Information

Post Office

Review Orders

Help

Home Page

SUPPLIER
A

Please confirm order details prior to submitting.

Confirmation number will appear after order submitted

Item #	Description	Unit Of Measure	Qty.
CRB	Creole Rice & Bean	4 kg.	1
MV-COLE	Creamy Coleslaw	4 kg.	3
MV-CSR	Carrot and Rasin	4 kg.	2
MV-CPS	Chicken Bombay	4 kg.	1
ProductCode	Garden Salad	3 kg.	1

Order Delivery Date; May 27, 2000

Notes: This is a Saturday Delivery so please have driver ask for Jocelyn, 381

Submit

382

or return to order form to modify your order.

Figure 12

380

709760 80E60860

Welcome Jasmine Barrette

Your Order Has Been Received

This order will appear next time you log in.

Order Delivery Date: Saturday May 27, 2000

Salad Station Order. P.O.# 2222

Order Confirmation Number 600

Thank you for choosing Supplier A.

Order Desk

Information

Post Office

Review Orders

Help

Home Page

11/10/00 13

390